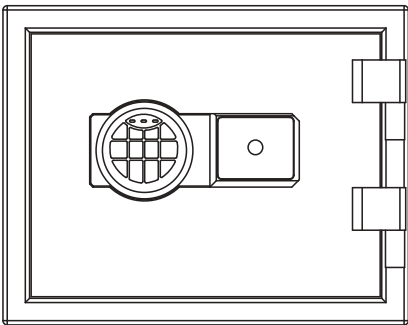


Instruction Manual



DELI GROUP CO., LTD.
301 Xuxiaoke Ave. Ninghai County
Ningbo 315600 China Made in China
info@nbdeli.com www.deliworld.com



**KEEP FOR
FUTURE USE**

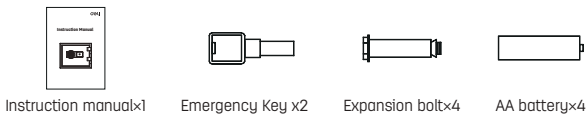
Version: 1.0
Date: 10-2023

Contents

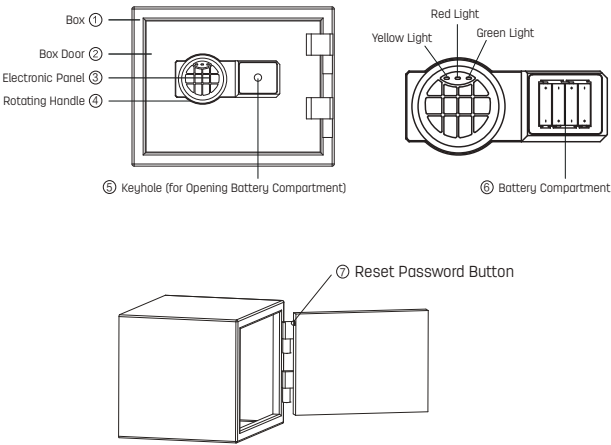
1. Product Unpacking	1
2. Product Diagram	1
3. First-time Use	2
4. Password Setup	2
5. Door Opening and Closing Operations	2
6. Emergency Opening	3
7. Alarm Instructions	3
8. Installation Instructions	3
9. Usage Precautions	4
10. Common faults and troubleshooting	4
11. After-sales Service	5

Welcome to our series products of safes (cabinets) and lock boxes. Please read the instruction manual carefully before use, and operate correctly according to the instructions.

1. Product Unpacking



2. Product Diagram



3. First-time Use

1. After placing the box in position, first open the electronic panel battery cover (the keyhole is inside the battery compartment). Insert the key into the keyhole and turn it counterclockwise, then turn the handle clockwise to open the door. Install four AA batteries into the battery compartment on the electronic panel.
2. For convenience, please store the instruction manual and keys in a secure place, and do not place them inside the box.

4. Password Setup

1. Open the box door, press the setup button on the back of the box door, and the yellow light on the electronic panel will illuminate twice while you hear a "beep" sound. The yellow light will stay on continuously. Then, enter 3-8 digit password and press "*" or "#" to confirm. The yellow light will illuminate twice, and the buzzer will sound twice, indicating that the setting is successful.
2. The factory default password for this product is "159". To ensure security, please reset your personal password before using it.

5. Door Opening and Closing Operations

Enter the correct password, and after entering the password, press "*" or "#" to confirm. If you hear two "beeps" and the green light illuminates, it indicates successful entry. Rotate the handle to open the box door. If the yellow light flashes and you hear three "beeps," it means the password entered is incorrect, and you need to input the correct password again.

6. Emergency Opening

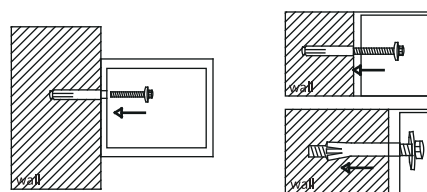
If there is a malfunction in the electronic system or if you forget the password, please use the spare key to open the door. The method of opening is the same as the first time.

7. Alarm Instructions

1. Incorrect Password Self-Locking Function
If three consecutive incorrect passwords are entered, the system will trigger an alarm, and the electronic panel will lock for 20 seconds, during which the electronic panel cannot be operated. If three consecutive incorrect passwords are entered again, the system will trigger an alarm, and the electronic panel will lock for 5 minutes, during which the electronic panel cannot be operated.
2. Low Battery Voltage Warning
If the battery voltage is low, a red indicator light on the electronic panel will illuminate, reminding you to replace the batteries.

8. Installation Instructions

For the sake of safety, please be sure to fix the cabinet on a solid concrete wall.



Installation layout

9. Usage Precautions

1. Do not put the user manual, main lock key, emergency key inside the box. Store them in other safe places.
2. If the product is not used for a long time, the battery should be taken out to prevent leakage from damaging the electronic system.
3. For safety, be sure to secure the container to a solid concrete wall.
4. Do not deposit excess cash and valuables without an on-duty or remote alarm device.

10. Common faults and troubleshooting

Fault phenomenon	Cause of failure	Elimination method
No response is received when the password is entered numerically	Battery dead	Slide to the right to open the black square battery cover on the right side of the electronic panel and replace the battery.
	Battery polarity is reversed	Load the battery correctly
	Circuit board fault	Please contact the maintenance department
The emergency key cannot be inserted or removed	There's a foreign object in the keyhole	Remove foreign bodies from keyholes
	The key is not turned to the limit	Please reinsert in the correct way
The electronic combination lock has been unlock. The door cannot be opened	The handle is not turned to the limit	Please turn the handle to the limit
	After turning the handle for more than 7 seconds, the electronic lock is reset	Re-enter the password and turn to the limit in 6 seconds
Alarm does not go off	Battery dead	Please replace the battery
	Battery polarity is reversed	Load the battery correctly

WARRANTY CARD

Thank you for your purchase of our products. The interests of customers who purchase our products will be protected. For any malfunction due to product quality problems, please contact authorized local dealers or service centers with this receipt and the warranty card.

Warranty terms:

1. For product failures occur under normal operating circumstances, free of charge repair and spare parts replacement service shall be provided by our company within one year commencing from date of purchase.
2. Customers are required to present this warranty card and the original purchase invoice to our company upon request for warranty service. This warranty card shall be valid only after the following form is filled out in details and affixed with official seal of the dealer.
3. No free of charge repair service shall be provided in the event of any of the following circumstances:

- (1) Expiration of the warranty period;
- (2) Damages caused by improper use, maintenance or storage not in accordance with the requirements of the user manual;
- (3) Failure or damage resulting from unauthorized disassembly, repair or modification;
- (4) Failure or damage caused by force majeure;
- (5) Wear parts or accessories.

This warranty card is being delivered with the product, one card for one product. Please keep this warranty card in proper condition for free warranty service. There is no replacement if lost.

Date of Purchase: _____ Y _____ M _____ D

WARRANTY CARD

Product Information	Product Name			Serial Number		
	Product Model Number			Manufacturing Date		
Customer Information	Company Name				Contact	
	Address				Phone	
Sales Information	Dealer Name				Contact	
	Address				Phone	
	Date of Purchase				Invoice No.	
Maintenance Record	Description of Malfunction	Maintenance Results	Customer Signature	Maintenance Technician Signature	Maintenance Date	

This copy shall be cut along the dotted line and kept by the dealer.

WARRANTY CARD

Product Information	Product Name			Serial Number		
	Product Model Number			Manufacturing Date		
Customer Information	Company Name				Contact	
	Address				Phone	
Sales Information	Dealer Name				Contact	
	Address				Phone	
	Date of Purchase				Invoice No.	
Maintenance Record	Description of Malfunction	Maintenance Results	Customer Signature	Maintenance Technician Signature	Maintenance Date	